

Esso Exploration & Production Chad Inc.

Village Impact Monthly Report

Land Use Mitigation Action Plan

February 2008

Prepared by the EMP Department

Table of content

Executive Summary	3
1. Village classification.....	4
1.1. Summary.....	4
1.2. Land Use Criteria.....	5
1.3. Socioeconomic Criteria.....	6
2. Land Acquisition Monitoring	8
3. Socioeconomic monitoring	9
3.1. Village Land Survey	10
3.2. Fast Track Mitigation Surveys	11
3.3. Land Acquisition Socio Impact Survey	11
3.4. Potential Eligible.....	12
3.5. Eligible	13
4. Land Return Monitoring in OFDA	14
4.1. Compensated and Returned Land by Land Use Type	14
4.2. Compensated and Returned Land by Facility Type.....	15
4.3. Project Footprint	18
5. Summary	19
6. Annex	20
6.1. Land Use Criteria.....	20
Criteria 1: Land use & footprint.....	20
6.2. Socioeconomic Criteria.....	21
Criteria 1: % Eligible after Project.....	21
Criteria 2: % Eligible by Project	21

List of Acronyms & terms used in this report

Hh	Household.
CdM	Household Chief (Chef de Ménage)
HhM	Household Member. Include the CdM and all it dependents, regardless their age.
LT	Land Take.
Eligible	Generic term to designate an individual that may be eligible to the EMP Resettlement Program.
Potential Eligible	Individual that may be eligible to the EMP Resettlement Program. Analysis must be completed.
True Eligible	Individual eligible to the EMP Resettlement Program.
EMP-IS	EMP Information System: manages Land Acquisition, Socioeconomic and Land return data.
Land Survey	Formally called Cadastre survey. Refer to the measurement of every field, fallow & house of households.
Project Footprint	Total area occupied by the project at a given time (e.g. Compensated but not returned land)

Executive Summary

This Monthly Survey of Land Use Mitigation Action Plan (LUMAP) activity provides information to EEPCI management and the IFC on the progress made in calculating, analyzing and reducing the Project impact on villages and households.

Tracking the impact on communities is the purpose of Village Impact Classification and the "Watch List" of villages' status. The classification follows the movement of a village from one category to another in order to judge the effectiveness of LUMAP mitigation measures or signal when the effect of ongoing project land take needs to be promptly addressed within the drill well program using the Environmental Management Plan (EMP) principles and procedures.

The village impact classification (high, approaching high, medium and low) is used to:

- Improve the targeting of EMP mitigation activities in the OFDA
- Determine and/or validate eligibility (actual versus estimated) for Supplemental Community Compensation
- Alert EMP Team on the need for Site Specific Plans and Land Surveys

The February Village Impact Classification has:

- 7 high impact villages
- 4 approaching high villages
- 3 moderate impact villages
- 10 low impact villages

LUMAP maintains a "Watch List" that tracks village land take and return. As of February 2008, four of the moderate impact villages are approaching the high category because of continuing land acquisition and number of people eligible:

- Begada
- Bela
- Maikeri
- Mouarom

During 2007 LUMAP developed Geographic Information System (GIS) mapping, socio-economic survey tools and information filters. These show that the number of At-Risk Households (Hh) in the most highly impacted village, Dokaidilti, for which the Land survey has been completed, is two (2) out of eighty five (85) households. Similar surveys were ongoing in two other high impact categorized villages through February 2008. These surveys are ongoing.

The body of this report conveys the data concerning village status and the evolution of project land take and return. It also explains the nature of the instruments being used to measure and monitor the evolution of the situation at the community level.

1. Village classification

1.1. Summary

The Village classification is calculated using land use (total amount of land; amount of temporary and permanent take) and socioeconomic criteria (less than 2/3 Corde (c) per Hh Member (HhM) before project and currently). Each criterion classifies a village using impact assessment criteria and categorizing into one of four categories: High, Approaching High, and Moderate & Low. The final categorization of a village is done according to its worst placement by any one of the three impact criteria. The next table show the February 2008 Classification, in decreasing order of severity of impact.

Table 1 : Village Classification February 2008

Categories	Village
High	<ul style="list-style-type: none"> • Dokaidilti • Ngalaba • Béro • Dildo • Danmadja • Mbanga • Madjo
Approaching High	<ul style="list-style-type: none"> • Bégada • Béla • Mouarom • Maikeri
Moderate	<ul style="list-style-type: none"> • Madana Nadpeur • Maïnani • Missimadji
Low	<ul style="list-style-type: none"> • Kairati • Bendo • Ndoheuri • Komé • Miandoum • Naïkam • Merméouel • Morkété • Koutou Nya • Maïmbaye

A sub section of the moderate villages has been created to show which villages are close to falling in the high category.

The following subsection details all criteria scores for villages listed above.

1.2. Land Use Criteria

This table shows the Land Use Village Impact in terms of Permanent and Temporary Land Use. The total project land use is shown in terms of the percentage of the total village area (see annex 6.1). Last month's activities in land acquisition (↑) or land return (↓) are shown in Hectares. The criterion used for the current classification is the % of Permanent + Temporary Not Returned land within the village area at this time (the rightmost column in Table 2). Villages are sorted by the % of this criterion, from the highest to the lowest value.

The Permanent Section shows the situation of the village once all the temporary land has been returned. This is the final categorization until well shut-down and then reclamation and finally decommissioning begin. Note that some villages can pass from High to Moderate or Moderate to Low by returning the temporary land. This is, of course, a major purpose of the Land Use Action Plan, the other being to identify at-risk households.

Table 2: Land Use by Village in OFDA.

Village	Total Village Area (ha)	Permanent		Temporary Not returned		Perm + Temp Not Returned	
		Now	Last Month	Now	Last Month	Now	Last Month
Dokaidilti	812.4	15.4%		3.9%		19.3%	
Ngalaba	1879.4	6.5%		6.6%	(↓ 9.4 ha)	13.1%	(↓ 9.4 ha)
Béro	4239.7	6.3%	(↑ 5.0 ha)	6.0%	(↑ 3.0 ha)	12.3%	(↑ 8.0 ha)
Bégada	2478.6	4.5%	(↑ 4.7 ha)	6.1%	(↑ 2.1 ha)	10.7%	(↑ 6.8 ha)
Dildo	1961.3	9.9%		0.5%		10.4%	
Danmadja	449.4	3.7%		6.5%	(↓ 3.5 ha)	10.2%	(↓ 3.5 ha)
Béla	2315.1	4.4%		5.5%	(↓ 3.2 ha)	9.9%	(↓ 3.2 ha)
Mouarom	1585.4	4.5%	(↑ 0.6 ha)	4.6%	(↑ 2.7 ha)	9.1%	(↑ 3.3 ha)
Maïkéri *	1208.1	3.4%		5.1%	(↓ 4.0 ha)	8.5%	(↓ 4.0 ha)
Mbanga	3050.4	2.3%	(↑ 2.4 ha)	6.6%	(↑ 3.7 ha)	8.9%	(↑ 6.1 ha)
Madanan N.	323.1	1.3%		4.0%		5.2%	
Madjo	1921.3	2.6%		2.4%		5.0% **	
Maïnani	1696.2	2.8%		1.5%		4.3%	
Kaïrati	179.9	2.2%		0.2%		2.4%	
Bendo	809.0	1.2%		0.6%	(↓ 1.1 ha)	1.8%	(↓ 1.1 ha)
Ndoheuri	830.2	1.0%		1.1%		2.1%	
Komé	2569.3	1.0%		0.5%		1.5%	
Miandoum	4133	0.8%		0.6%		1.4%	
Missimadji	840.6	0.7%		1.0%		1.7%	
Naïkam	1773	0.7%		0.6%		1.3%	
Merméouel	1121.2	0.6%		1.2%		1.8%	

Morkété	524.2	0.5%		0.4%		0.9%	
Koutou Nya	1819.6	0.4%		0.2%		0.6%	
Maïmbaye	373.5	0.0%		0.0%		0.0%	

* Maikeri shows the effect of both the original and satellite project.

** High on the basis of the number of eligible people

Permanent land that is no longer needed by the project is identified, reclaimed and returned.

1.3. Socioeconomic Criteria

The two socioeconomic criteria are related to the number of Project-impacted households falling below the resettlement factor of 2/3 cord per individual. (See the annex for more details on the [Eligible After Project](#) and [Eligible by Project](#) criteria.) The next table presents the scoring of all the villages by each of these two socioeconomic criteria.

Table 3 : Socioeconomic criterion values for February 2008.

Eligible After Project	Value Now	Since Last Month	Eligible by Project	Value Now	Since Last Month
Mbanga	71 %	↑ 1 %	Danmadja	26 %	↑ 1 %
Madjo	70 %		Mbanga	18 %	↑ 1 %
Danmadja	48 %	↑ 1 %	Madjo	17 %	
Béro	41 %	↑ 1 %	Béro	17 %	↑ 1 %
Ngalaba	32 %	↓ 1 %	Bégada	16 %	↑ 1 %
Bégada	32 %	↑ 1 %	Mouarom	13 %	
Béla	28 %	↑ 1 %	Béla	12 %	
Mouarom	27 %	↓ 1 %	Ngalaba	11 %	↓ 1 %
Dokaïdilti *	20 %		Missimadji	8 %	
Missimadji	17 %		Maïnani	8 %	
Dildo	16 %		Dildo	3 %	
Bendo	14 %		NDoheuri	2 %	
Madanan N.	14 %		Morkété	2 %	
Maïnani	11 %		Miandoum	1 %	
NDoheuri	8 %		Kairati	1 %	
Miandoum	5 %		Merméouel	1 %	
Komé	4%		Komé	1%	
Merméouel	4%		Naïkam	1%	
Morkété	4%		Bendo	0%	
Kairati	2%		Madanan Nad.	0%	
Naïkam	1%		Dokaïdilti *	0%	

(*) As explained below, Dokaïdilti Land Survey is completed and the number of eligible has dropped from some dozen (evaluated) to 2 household (measured).

As explained below, the completed Land survey of Dokaidilti

Notice that the scores (Value Now) are computed on declarative data given by a person affected by project land take. These data are collected through the EMP Socioeconomic Survey and Compensation Process and the accuracy is less than adequate. This is a system.

Therefore, on a go-forward basis we will use to the greatest extent possible the Land Survey techniques as part of the EMP Socioeconomic Survey and Compensation Process to more accurately determine an individual's land use holdings and household size. This will give us a more accurate assessment of the individual's impact and allow us to offer resettlement options as appropriate on a timelier basis. Other system improvements will help us determine if the resettlement options are providing sufficient livelihood restoration.

The classification computed using measured data from Land Survey or Fast Track Mitigation Survey is far more accurate. For example, Dokaidilti village was originally estimated to be high in both land take and socioeconomic classifications. Once the Land Survey data was analyzed this village is no longer in the High category, in fact it will be moved to the Low category before the next rainy season, once the formal Quitus process has officially returned the land.

2. Land Acquisition Monitoring

The following is a list of all compensated facilities (called by EMP "Compensation Subjects") in February. For each subject a Land Take is required.

Table 4: Summary of all compensated Subjects in February

Date	Subject	Sector	Type	Area m ²		Nbr Individual Impacted	Residency Village
				Permanent	Temporary		
2/29/2008	K745	Komé	Well pad	20 361	6 869	19	Madjo
2/29/2008	K725	Komé	Well pad	16 300	6 869	12	Mbanga
2/27/2008	K705 Rev.1	Komé	Well pad	20 562	6 869	24	Bégada
2/27/2008	UGC-B312 Rev.1	Bolobo	Underground Cable		1 135	2	Béla
2/21/2008	K710	Komé	Well pad	17 369	6 869	16	Bégada
2/21/2008	KWL-K165K600	Bolobo	FlowLine		19 241	1	Bégada
2/21/2008	UGC-K053	Komé	Underground Cable		189	1	Bégada
2/21/2008	KF543	Komé	FlowLine		11536	1	Béla
2/21/2008	K740	Komé	Well pad	7 470	6 869	4	Béro
2/21/2008	UGC-K063	Komé	Underground Cable		589	1	Béro
2/21/2008	UGC-K130	Komé	Underground Cable		1 270	3	Béro
2/21/2008	UGC-K213	Komé	Underground Cable		1 222	3	Béro
2/21/2008	KF543	Komé	FlowLine		11 536	1	Komé
2/21/2008	KF543	Komé	FlowLine			6	Mbanga
2/21/2008	KWL-K165K600	Bolobo	FlowLine		19 241	11	Mbanga
2/20/2008	BF222	Bolobo	FlowLine		5 819	2	Béla
2/20/2008	BF222	Bolobo	FlowLine			5	Danmadja
2/19/2008	BF080	Bolobo	FlowLine		2 298	1	Danmadja
2/19/2008	BF080	Bolobo	FlowLine			11	Mouarom
2/15/2008	BF212	Bolobo	FlowLine		2 722	4	Mouarom
2/8/2008	BF239	Bolobo	FlowLine		11 372	11	Danmadja
2/6/2008	K053 (New)	Komé	Well pad	9 331	6 869	4	Bégada
2/6/2008	K130	Komé	Well pad	1 192	6 869	9	Béro
2/6/2008	K234	Komé	Well pad	19 403	6 868	7	Béro
2/6/2008	BF081	Bolobo	FlowLine		3 525	4	Danmadja
2/1/2008	K184	Komé	Well pad	23 764	6 869	17	Mbanga
2/1/2008	MWL M155M523-REV1	Miandoum	Water Injection Line		25 264	10	Miandoum
2/1/2008	MWL M155M523-REV1	Miandoum	Water Injection Line			1	Ngalaba
Total				135 752	176 057	183	

Note that the total individuals compensated in the month do not match the sum of the "Nbr Individual Impacted" column. Some individual have been compensated more that once.

3. Socioeconomic monitoring

This section presents the current status of socioeconomic surveys carried out and Eligible people identified. The next figure summarizes the steps followed to find people Eligible for the resettlement program.

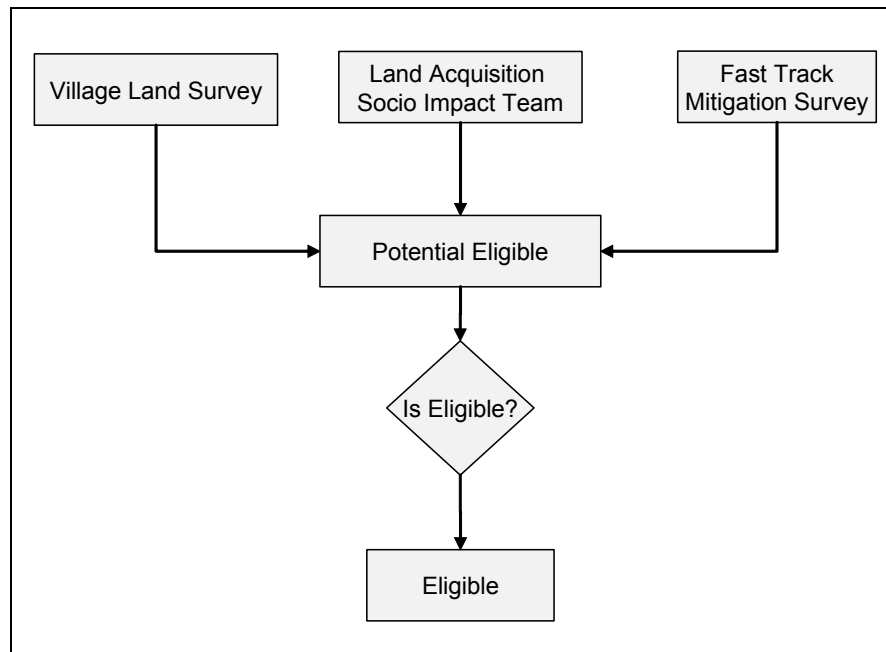


Figure 1 : Eligible identification process.

As illustrated above, three sub processes identify potential Eligible. All of these sub processes use the *Land Survey Methodology*, which relies on a detailed socio-economic form, a GPS survey of all land used by the household and descriptions and pictures of all their buildings and improvements. The January report gives more detail on these three processes.

Beginning in February, the above process is supported by the EMP-IS. Featuring:

- Centralized socioeconomic survey instrument
- Electronic documentation for all data and decisions
- Electronic stewardship of the process by dossier
- Electronically generated follow up actions on a per dossier basis
- Data capture and stewardship of the Off Farm Training and Improved Agriculture Training (JMN)

The above required a significant amount of training for the Fast Track, Impact and JMN teams. Thirty hours of training were provided to these users in March. In that training session, the February data was keyed into the EMP-IS. The users learned how to use EMP-IS, however, more importantly learned about the accuracy and thoroughness of the data during the data capture process (e.g. their field work).

3.1. Village Land Survey

The Land Survey is one of the two processes that identify any potential Eligible. The following table resumes all Land Surveys performed in the previous month.

Table 5 : Total number of HH Survey by village.

Village	HH survey in February	HH Survey at end of January 2008	Total	Total HH expected
Dokaidilti	0	85	85	Completed
Dildo	33	136	169	200
Ngalaba	23	121	144	300

The next graph shows the total number of household surveyed from September 2007 to February 2008.

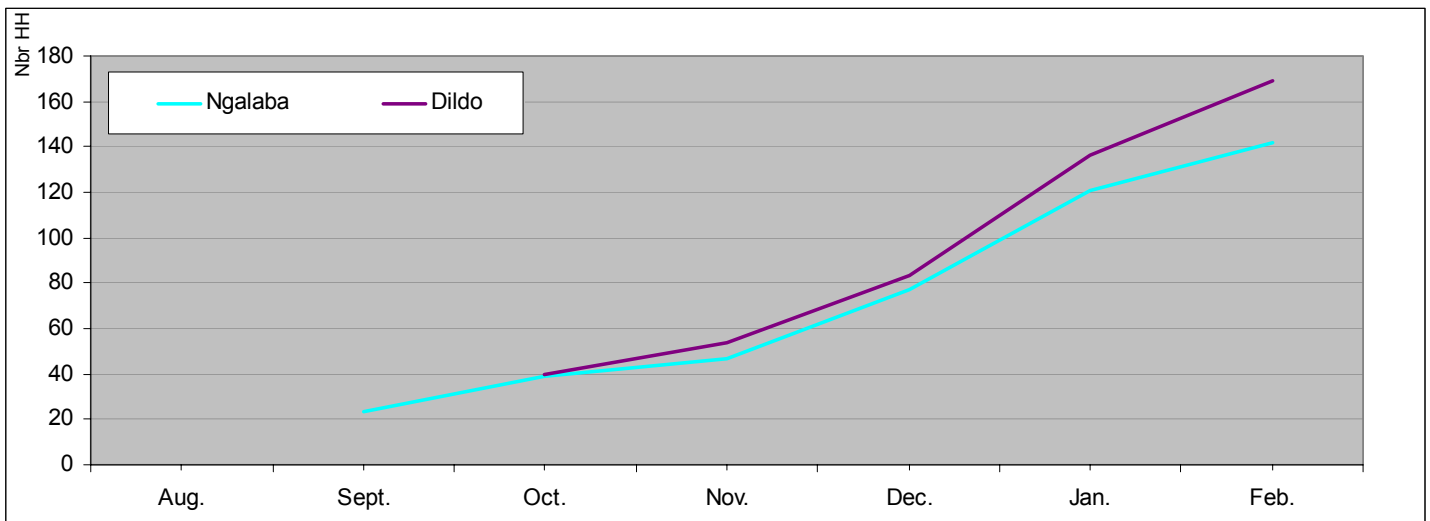


Figure 2 : Number of HH surveyed by Land Survey Teams.

The Land Survey at Dildo should conclude by the end of May. The Ngalaba survey will likely continue through July. As explained in January report, both villages have similar populations; however, Ngalaba’s geography is such that field and fallow are in some cases a long distance from the residential areas.

3.2. Fast Track Mitigation Surveys

The Fast Track Mitigation Survey Team (Fast Track Team) surveys individuals compensated in the past that appear to be resettlement eligible but do not reside in villages (high impact) slated for Land Survey.

Fast Track Mitigation Surveys started in December 2007.

As presented in the next table, **21** households were surveyed in February. At present we estimate that there are approximately 500 households (outside highly impacted villages) to be surveyed by the Fast Track Team. In Section 3.4 we describe some re-work required.

Table 6 : Total number of HH Surveys in February by the Fast Track Team.

HH survey in February	Total HH Survey	Total HH expected
21	105	500

The following graph presents the work progress since December 2007.

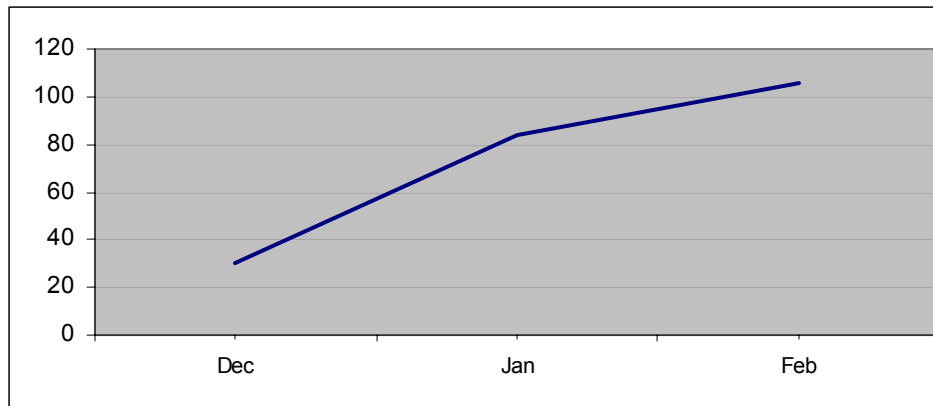


Figure 3 : Fast Track Team work progress through February 2008.

3.3. Land Acquisition Socio Impact Survey

The Land Acquisition Socio Impact Team (Impact Team) surveys individuals affected by current land take (section 2).

A total of 101 individuals/households were surveyed in February. The remaining individual/households (from Table 4: 183 individuals - 101 = 82) were in process in March.

3.4. Potential Eligible

As we drilled down and integrated data into the EMP-IS, a singular situation was detected, namely many Hh presented a very small amount of land (ex.: less than 2 corde) for a high number of dependents (ex: more than 10). After discussion with Impact and Fast Track Teams, we learned that both teams only surveyed crop fields used by the Head of Household (Chef de Menage – CdM) and did not survey the crop fields used by the CdM’s dependents. The root cause of this error was communication. Several methodology changes have been done in the last weeks/months without ensuring that all players were aware about the latest developments.

The situation was corrected as follows:

- A Stand Down Meeting was conducted with the surveyors and socioeconomic monitors by the EMP Socioeconomic Supervisor to ensure understanding on expectations and standards.
- Accuracy and thoroughness of each household is the key.
- Agreement by all parties on the necessity to go back to the field and survey crop fields used by the dependents of the households in question.

For the next few months the EMP-IS Specialists will monitor the data on a more frequent basis to ensure that the survey teams are collecting and documenting the data appropriately and build a monitoring/stewardship tool for local EMP management to use.

Therefore, EMP will not make as much progress in March and April given the rework.

The next table lists all surveys stored in the EMP system on date of March 25.

Table 7: Survey introduced in the EMP system.

	Fast Track Team	Impact Team
Nbr HH over 2/3 C/HhM	18	5
Nbr HH below 2/3 HhM	49	93

The 98 Impact Team surveys cover February while the 77 Fast Track Team surveys cover all December, part of January and all February. On general agreement, we decided rework all of the 142 HH below 2/3 corde/HhM and survey fields used by the HH dependents. The current expectation is to close this gap by the end of April.

When the land surveys for these household are completed, we will resume publishing the pending list of Potential Eligible (like in previous monthly reports)

3.5. Eligible

Eligibles are those who, after all analysis, present a resettlement factor below 2/3 corde of land per person in the household. Because of the situation described in the above paragraph, the 2008 eligible list has not changed. We expect to update this list when the current situation is corrected. The next table and figure show the situation at the end of January.

Table 8 : Number of Eligible declared in January.

Village	January			2008
	Land Survey	Impact Team	Fast Track	Total
Bégada	-	-	2	2
Béla	-	-	2	2
Bolobo	-	-	1	1
Miandoum	-	-	23	23
Missimadji	-	-	4	4
Total (5 villages)	-	-	32	32

By comparing the number of HH and the number of eligible for a village (next figure), we get the picture of the impact of the project.

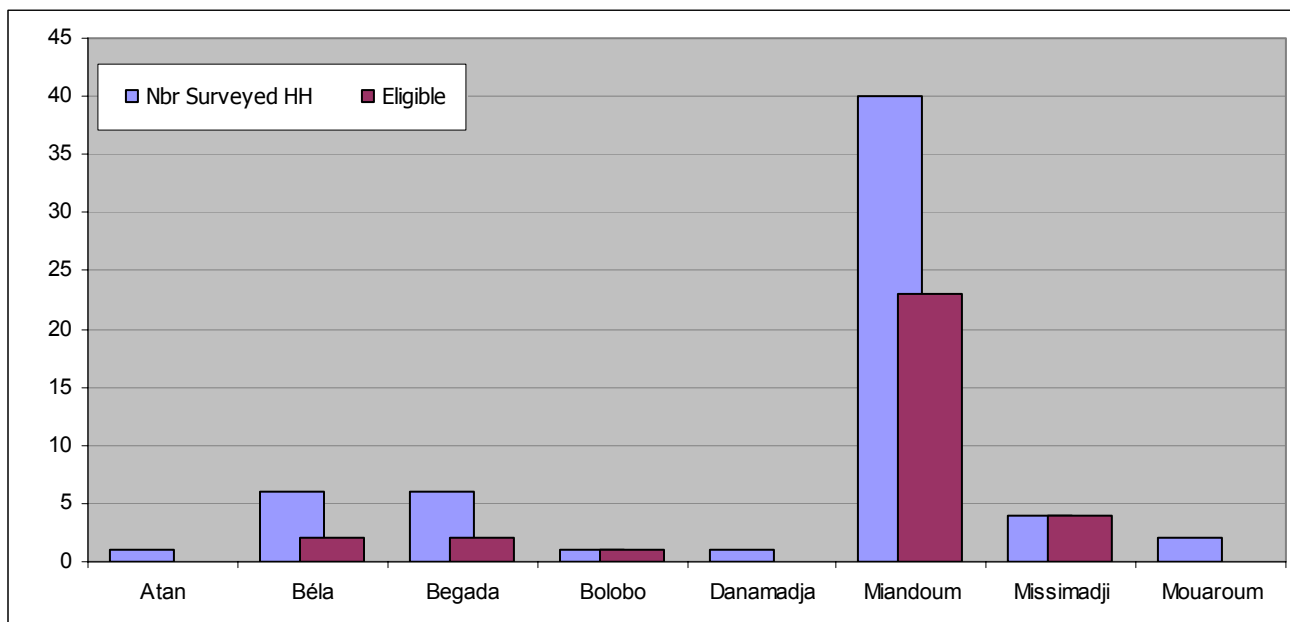


Figure 4: Surveyed HH and Nbr eligible for January 2008

4. Land Return Monitoring in OFDA¹

4.1. Compensated and Returned Land by Land Use Type

This section presents the compensated and returned areas. The compensated land is divided in four Land Use Types:

- | | | |
|---|---|--------------------|
| 1) Permanent with Public Access | } | Permanent Land Use |
| 2) Permanent with No Public Access | | |
| 3) Temporary Returned Without Restriction | } | Temporary Land Use |
| 4) Temporary Returned With Restriction | | |

Figure 4 presents the contribution of each Land Use Type in the total Compensated Land. The land returned is also noted but does not appear in the chart.

<i>Land Use Type</i>	<i>Total areas in Hectares</i>		<i>This month areas in Hectares</i>	
	<i>Compensated</i>	<i>Returned</i>	<i>Compensated</i>	<i>Returned</i>
1) Permanent With Public Access	565.7	20.4	8.0	0.0
2) Permanent With No Public Access	802.3	37.6	4.7	0.0
Sub Total Permanent	1368.0	58.0	12.7	0.0
3) Temporary Returned Without Restriction	396.7	191.6	0.0	0.0
4) Temporary Returned With Restriction	1396.6	379.5	14.8	23.6
Sub Total Temporary	1793.3	571.1	14.8	23.6
TOTAL (Permanent + Temporary)	3161.3	629.1	27.5	23.6

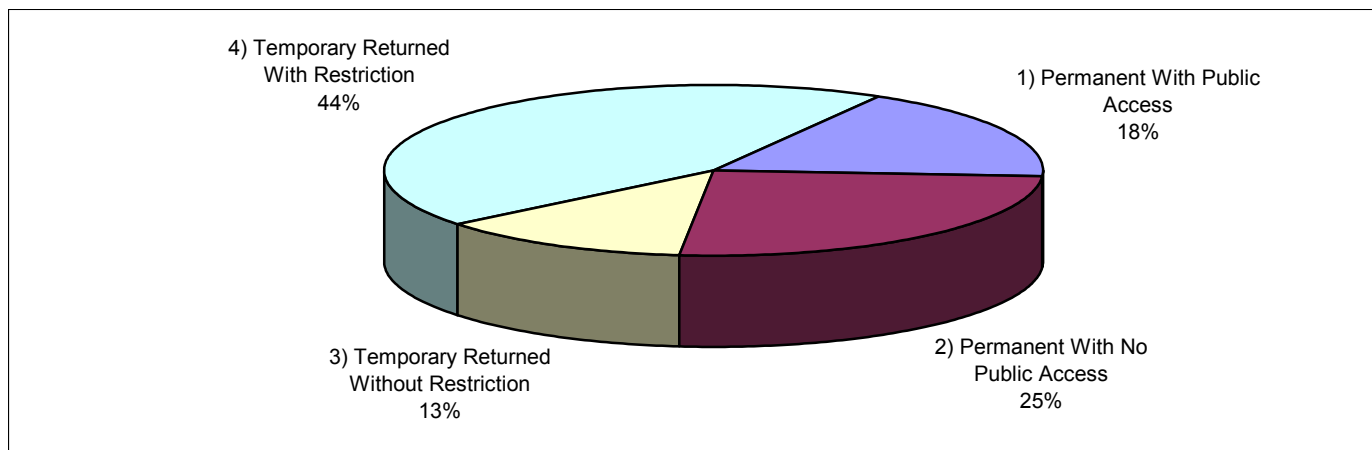


Figure 4: Total Compensated and Returned Land in OFDA

¹ OFDA Area includes the oil concessions of Miandoum, Bolobo and Komé (See map in Annex)

4.2. Compensated and Returned Land by Facility Type

It is interesting to look in more detail at each of these categories, and see the different facility types that compose them. The tables and charts on the next pages show the contribution of the different facility type that exist in the four land use types, as well as their land acquired and returned status

Facility Type	Compensated	Returned	% Returned
Main Road	76.4	0.0	0.0
Access Road	489.3	20.4	4.2
Total	565.7	20.4	3.6

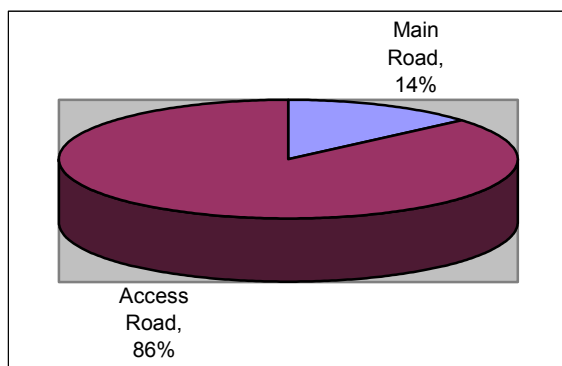
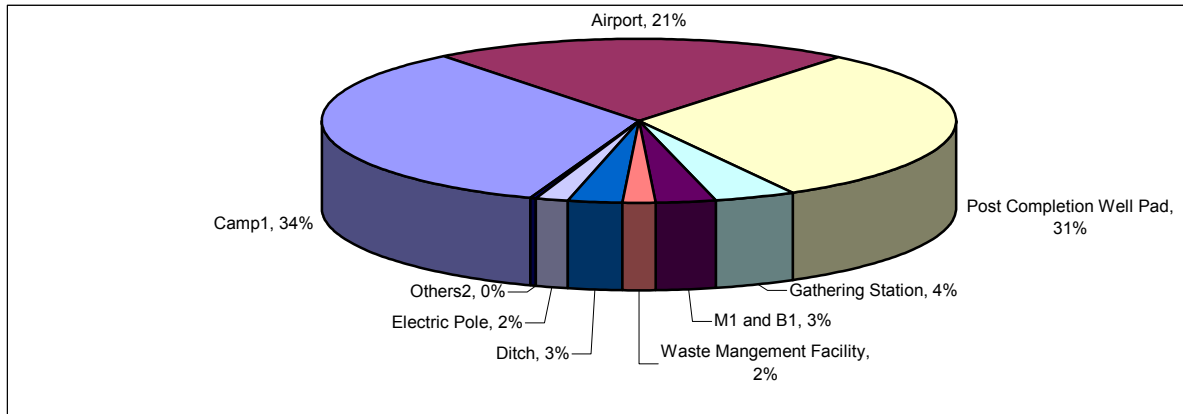


Figure 5: Land Use Type 1) Permanent with Public Access (Areas in hectares)

Although the area taken by roads is not small, the main road now serves as the second economic artery behind the national highway for moving local production from the OFDA region, the Prefectures to the south of the OFDA, and bordering portions of the Central African Republic. The access roads are convenient for the many bicycles, hand carts; oxcarts and motorcycles inhabitants have acquired with their compensation money and are frequently used by farmers going to their fields, which branch off on the footpaths only when they get near their destination.

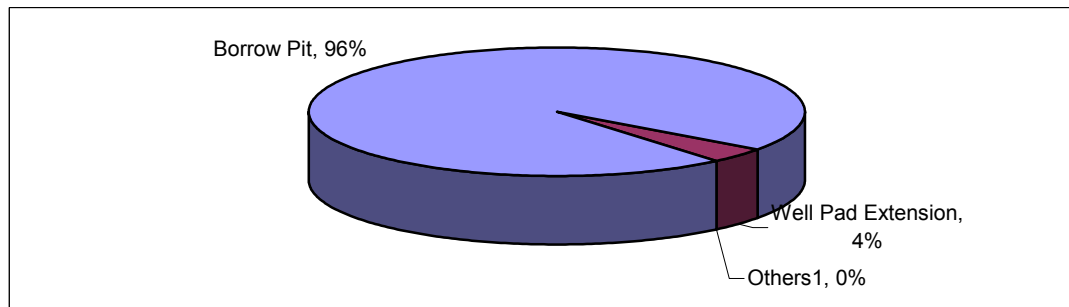
Facility Type	Compensated	Returned	% Returned
Camp ¹	272.0	0	0.0
Airport	170.5	20.5	12.0
Post Completion Well Pad	251.6	8.3	3.3
Gathering Station	31.9	4.1	12.9
M1 and B1	26.0	4.7	18.1
Waste Mangement Facility	12.2	0	0.0
Ditch	22.4	0	0.0
Electric Pole	12.7	0	0.0
Others ²	2.9	0	0.0
Total	802.2	37.6	4.7



1. Kome Base, Kome 5, Lagoon, Leach Field
2. Piezometers, Service Area, Water Well

Figure 6: Land Use Type 2) Permanent with No Public Access (Areas in hectares)

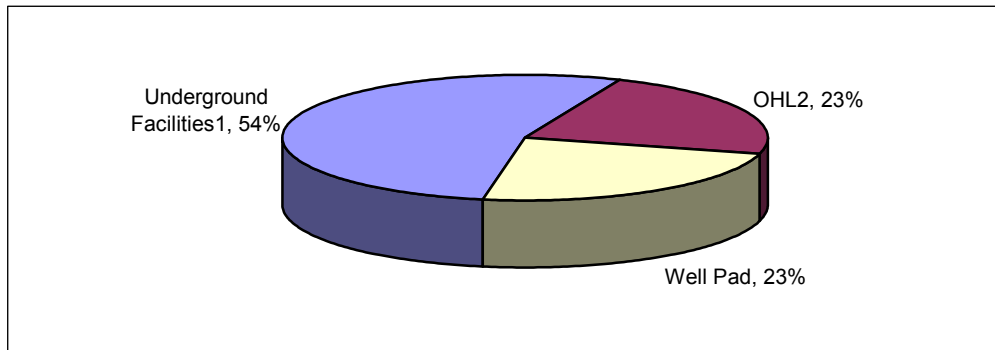
Facility Type	Compensated	Returned	% Returned
Borrow Pit	381.5	187.0	49.0
Well Pad Extension	15.0	4.6	30.7
Others ¹	0.3	0.0	0.0
TOTAL	396.8	191.6	48.3



1. Water Line Access & Soil Boring

Figure 7: Land Use Type 3) Temporary Returned Without Restriction (Areas in hectares)

Facility Type	Compensated	Returned	% Returned
Underground Facilities ¹	748.5	44.0	5.9
OHL ²	320	70.6	22.1
Well Pad	328.1	264.8	80.7
TOTAL	1396.6	379.4	27.2



1. Flowline, Gathering Line, Water Injection Line, Trunkline, Pipeline, Underground cable
2. 33 Kv, 66 Kv, 132 Kv

Figure 8: Land Use Type 4) Temporary Returned With Restriction (Areas in hectares)

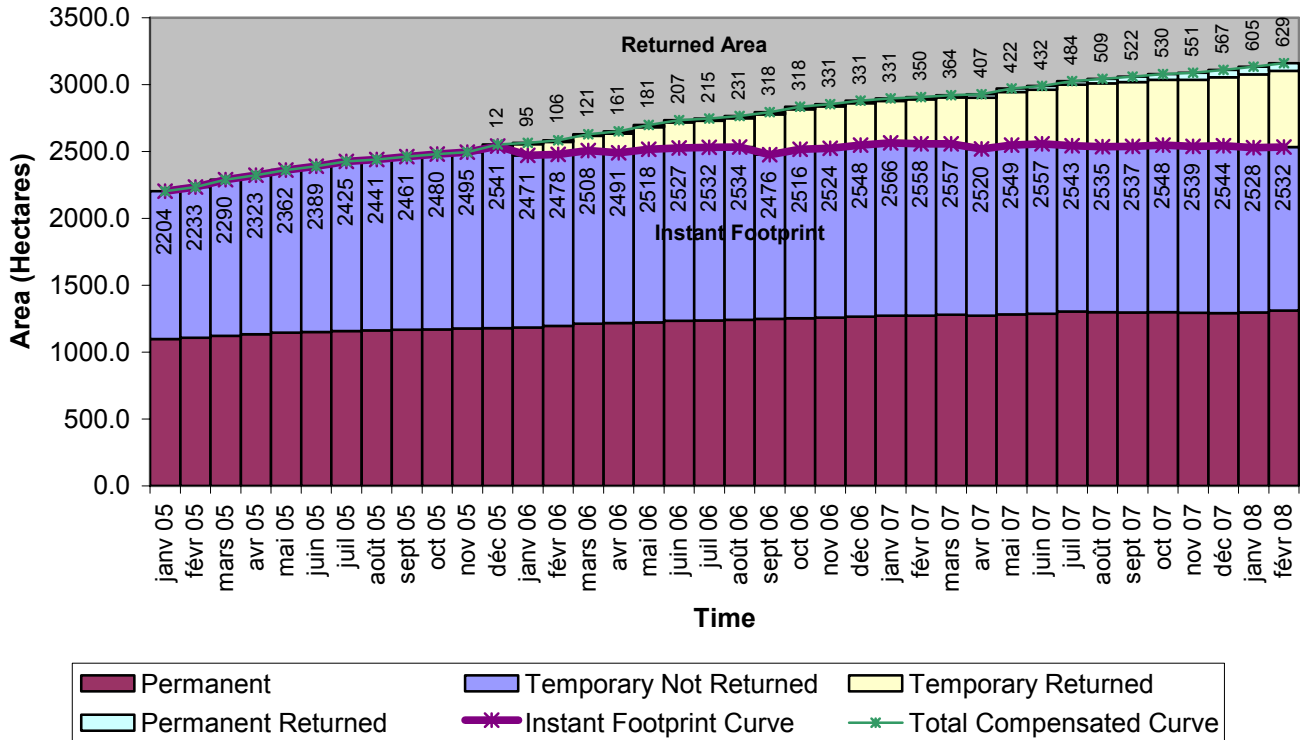
The export pipeline right of way in the OFDA is 47.2 ha (30 m * 15.8 km). However, only 7.5 m on each side of the center line is returned with restriction. Therefore, half of the total right of way (23.6 ha) has been returned without restriction. The restrictions on using land covering underground facilities are not onerous. No planting of trees, digging of holes, or construction of buildings, all of which might damage the lines or prevent easy access when needed. Otherwise any cultivation is allowed. Acquisition of a special work-over rig for well maintenance has further reduced the well pad area from the 1 Ha. used for drilling . The areas under the 66Kv and 33Kv and other electrical lines present more of a challenge. The greatest problem is accessing the power poles for repairs – frequent enough in this lightning-prone area. How access is achieved is constrained by hazards related to safety: the growth of high grasses or normal crops during the rainy season impedes visibility for repair crews and security patrols, who risk colliding with people, cars, animals, bicycles, etc. making their way along the obscured footpaths. The risk is increased at night. Secondly, crops or grasses will be burned off intentionally or by bush fires at the end of the agricultural season, depositing carbon on the lines and increasing the probability of short circuits. EEPCI plans to resolve this seeming dilemma by planting the OHL ROW in low growing forage crops that will be used during the rainy season by children gathering fodder for their tied-up domestic animals and by the animals themselves once the rains have stopped.

4.3. Project Footprint

This section presents the evolution of the project footprint since January 2005. It is interesting to see the amount of land returned (the area between the two curves). The purple curve shows the footprint (compensated and not returned yet) and the green curve shows the total compensated land, the labels above the green curve are the total returned area.

As you can see, the Project footprint has not grown since December 2005 (2 years).

Land acquired and returned since January 2005



5. Summary

This report covers Land Use Mitigation Action Plan progress in the month of February 2008. As of the end of 2007 the LUMAP had developed tools for measuring project impact at the village level. These tools are being used in 2008 to monitor ongoing land acquisition and to understand the impact of previous land use.

At the beginning of 2007 the tool being used depended on information given by individuals being compensated for land and was, therefore, subject to bias. How honest was the individual being in declaring his land holdings and number of dependents? Did s/he see some advantage in misreporting or not? With this initial tool 5/61 villages in the OFDA seemed in 2006 to have been highly affected by project land needs (Barclay/Koppert Report). By the end of 1Q2007 EMP had developed a tool using GPS land measurements; this system showed only 4 highly impacted villages. Since the tool needed further fine-tuning the number of high villages was kept at 5. In 3Q2007 the tool was refined with the addition of social measurements of the number of individuals/Hh potentially At-Risk in a village, i.e. holding less than the 2/3c per HhM needed to be viable if dependent on agriculture alone. With these additional measures the total number of highly impacted villages rose to 7. As of January 2008 this number had not changed. As we go forward using the Land Surveys, we will have the information to validate the village impact severity for the currently categorized high impact villages and the approaching high and medium impact villages on our watch list.

LUMAP also introduced more quantitative measures (GIS mapping and in-depth social surveys) that presented a clearer picture. One village-wide survey had been completed by end 2007 and two (2) are on-going in February 2008. The finished survey, in Dokaïdilti, the most highly affected village (on the basis of land take) showed that thirteen (13) Hh had less than enough land, however, three (3) of the thirteen (13) have not been impacted by Project land take.

The Fast Track Survey Team is using existing data to identify and target individuals/Hh At-Risk and then use the filtering tools to validate impact and eligibility for Fast Track Mitigation.

As an example, the filtering tools were used in Dokaidilti. It was determined that only two (2) (2 out of remaining 10) households were truly at risk. This was the actual degree of impact at this allegedly "most highly affected village". It is to be hoped that the on-gong surveys follow this trend.

The main objective of the Fast Track Survey Team using the filter is to identify individuals/Hh in villages that are not scheduled for Land Survey (not high impact and not on watch list) who may be at risk due to Project land take. The unreliability of the Compensation Data collection method (declarative from the land user) used to determine eligibility for resettlement prompted LUMAP's further investigation of their situation.

The most basic mitigation measure possible for reducing project impact is the reclamation and return of land to village use. This monthly report also tracks land return data. In February 2008, 23 ha were returned making a total of **629 Ha** by end of February 2008.

6. Annex

6.1. Land Use Criteria

Criteria 1: Land use & footprint

Two criteria are presented for the village Land Use impact. Both of them represent the percentage of village area used by the project within each village. The boundaries of the village are not official and are computed based on a global survey of village limit. The thresholds represent “natural breaks” or large numerical gaps in between villages.

A. Permanent Land Use Percentage

Criteria used to indicate the final situation of the villages once the temporary land will be completely returned.

$$\frac{\sum \text{Permanent Not Returned}}{\sum \text{Village Area}}$$

Sub Threshold	
	Between
High	≥ 5%
Approaching High	4% - 4.9%
Moderate	2% - 3.9%
Low	0% - 1.9%

B. Current Village Footprint

Used for final classification and gives a view of the project land use considering the temporarily, but not yet returned, compensated land. The final percentage is computed by adding the not returned land temporarily and permanently used by the project

$$\frac{\sum \text{Permanent Not Returned} + \text{Temporary Not Returned}}{\sum \text{Village Area}}$$

Sub Threshold	
	Between
High	≥11%
Approaching High	7% - 10.9%
Moderate	3% - 6.9%
Low	0% - 2.9%

6.2. Socioeconomic Criteria

Criteria 1: % Eligible after Project

Description: Percentage at the village level of the number of individuals below the resettlement factor of 2/3, regardless of their situation before any project impact.

Rule:

$$\frac{\sum (\text{All HhM of All eligible Hh after land take, regardless their previous situation})}{\text{Village Population}}$$

Threshold:

Threshold Criteria 2		
	Min	Max
High	50.1%	100%
Approaching High	30.1%	50%
Moderate	20.1%	30%
Low	0%	20%

Criteria 2: % Eligible by Project

Description: Percentage at the village level of the number of individual that were not eligible before any project impact (the resettlement factor > 2/3) and became Eligible after project impact (the resettlement factor < 2/3).

Rule:

$$\frac{\sum (\text{All HhM of All Hh those are not eligible before land take & are eligible after Land take)}}{\text{Village Population}}$$

Threshold:

Threshold Criteria 3		
High	20.1%	100.00%
Approaching High	15.1%	20.00%
Moderate	9.1%	15.00%
Low	0%	9%

